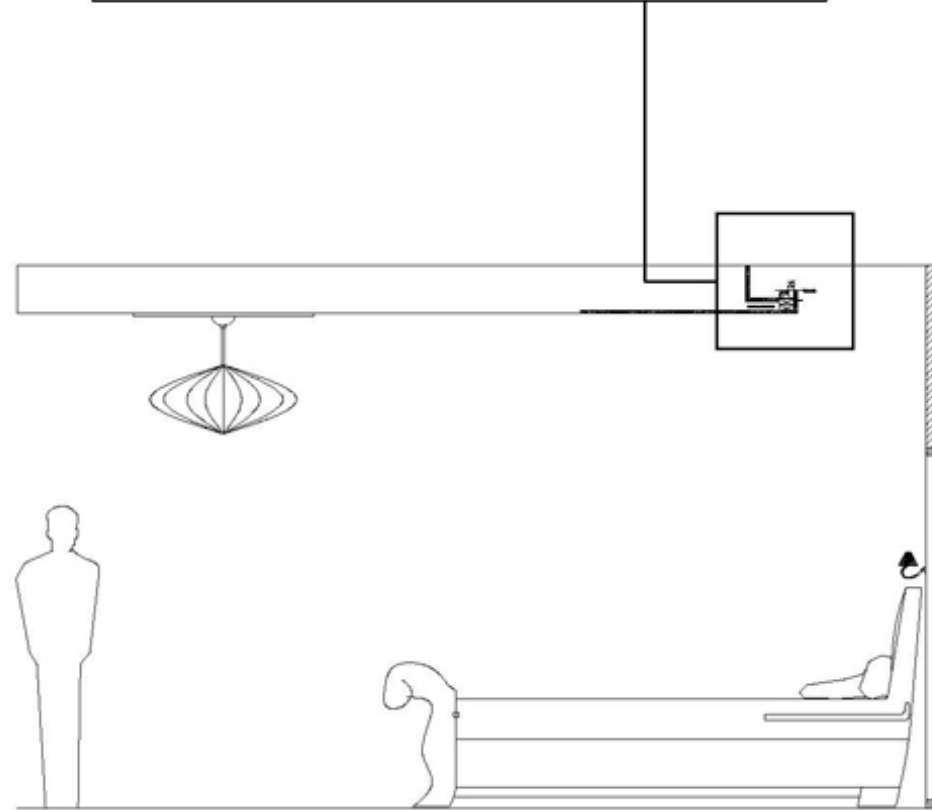
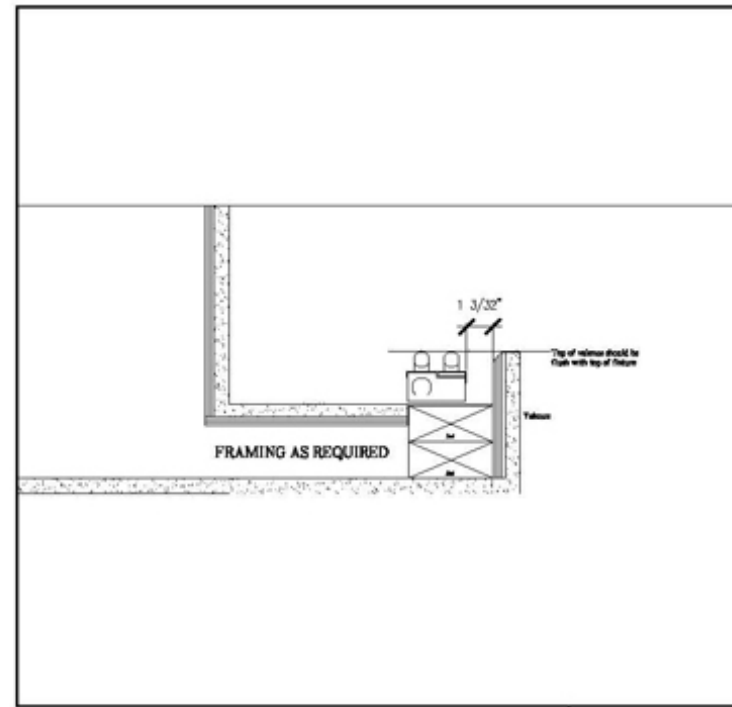
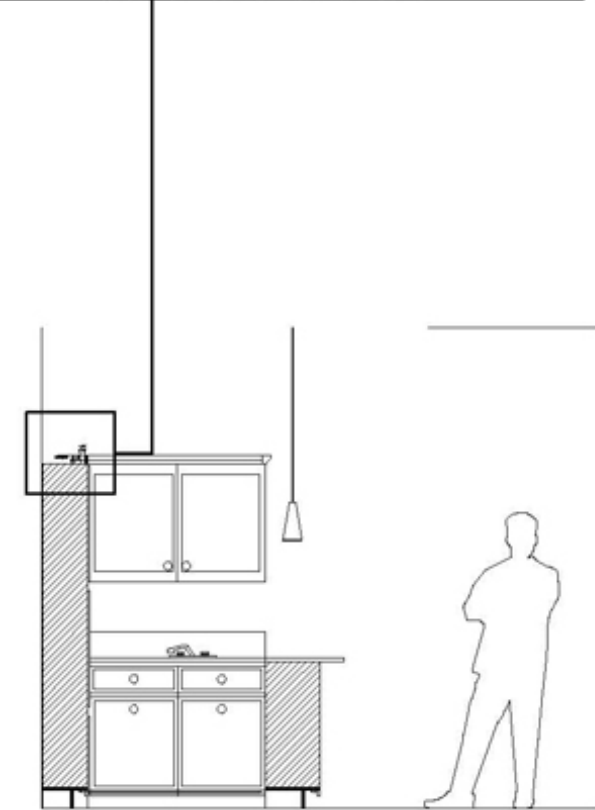
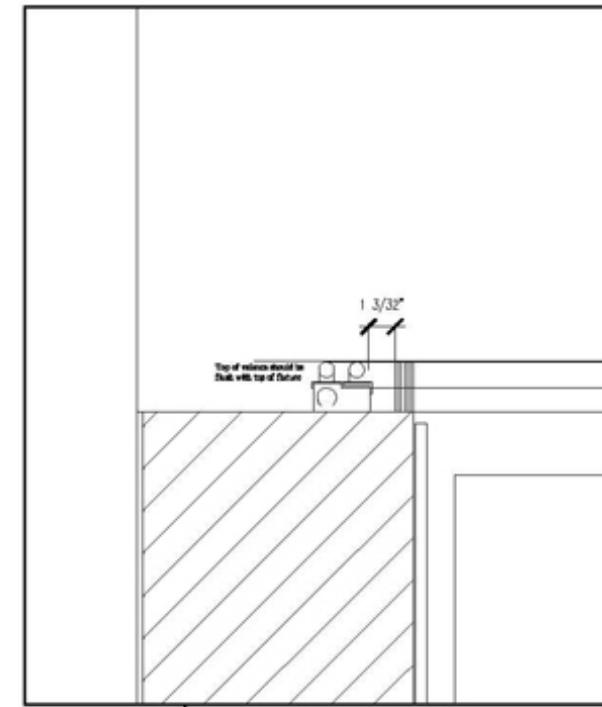


**DT1** DETAIL OF FLUORESCENT COVE DISPLAY  
SCALE: 1/4" = 1' - 0"



**DT2** DETAIL OF FLUORESCENT COVE DISPLAY  
SCALE: 1/4" = 1' - 0"



**DT3** DETAIL OF FLUORESCENT UP DISPLAY  
SCALE: 1/4" = 1' - 0"

TYPE	QTY	MANUFACTURER	SPECIFICATIONS	DESCRIPTION
A	65	LIGHTOLIER	LYTECASTER 1046	RECESSED DOWN LIGHT WITH SPECULAR CLEAR ALZAK
A	65	LIGHTOLIER	LYTECASTER 1000IC	IC HOUSING 7-5/16" HIGH
A	65	BULBRITE	JTT100WH	BT-15 SOFT WHITE 100W
B	45	LIGHTOLIER	LYTECASTER 2029 CL	RECESSED ADJUSTABLE ACCENT DOWN LIGHT WITH SPECULAR CLEAR ALZAK
B	45	LIGHTOLIER	LYTECASTER 2000 IC	IC HOUSING 5-9/32" HIGH
B	45	OSRAM/SYLVANIA	50/PAR20/HAL/SPL/NFL30	50W 120V PAR LAMP 20 1/8" DIAMETER WITH 30° BEAM ANGLE
C	44	LIGHTOLIER	LYTECASTER 1096	RECESSED WALL WASH WITH SPECULAR CLEAR ALZAK
C	44	LIGHTOLIER	LYTECASTER 1000 IC	IC HOUSING 7-5/16" HIGH
C	44	BULBRITE	JTT60WH	BT 15 SOFT WHITE 60W
D	8	EURO FASE	TR-P405-32	SHOWER PLATE GLASS TRIM
D	8	EURO FASE	HG-4PI	4" PAR HOUSING FOR NEW CONSTRUCTION 6" HIGH
D	8	OSRAM/SYLVANIA	50PAR20/HAL/SPL/NFL30	50W 120V PAR LAMP 20 1/8" DIAMETER WITH 30° BEAM ANGLE
E	3	ARTEMIDE	MODULE 47"	MINI SURF FLUORESCENT SUSPENSION SYSTEM 4' LONG
E	3	OSRAM/SYLVANIA	FP54/830/A30/HO/ECO	54W T5 FLUORESCENT 48" LONG 3000K 82CRI
G	8	AMERICAN FLUORESCENT	YUQ120W	UNDER CABINET TASK LIGHT
G	8	OSRAM/SYLVANIA	FP24/830/HO	24W T5 FLUORESCENT 24" LONG 3000K 82CRI
H	33	LIGHTOLIER	LYTECASTER 2096	RECESSED DOWN LIGHT WITH SECULAR CLEAR ALZAK
H	33	LIGHTOLIER	LYTECASTER 2002 P1	NON IC HOUSING 5-1/2" HIGH
H	33	BULBRITE	JTT60WH	BT 15 SOFT WHITE 60W
J	8	EURO FASE	TR-402-25	PAR 20 4" SPCULAR CLEAR TRIM
J	8	EURO FASE	HG-4PI	4" PAR HOUSING FOR NEW CONSTRUCTION 6" HIGH
J	8	OSRAM/SYLVANIA	50PAR20/HAL/SPL/NFL30	50W 120V PAR LAMP 20 1/8" DIAMETER WITH 30° BEAM ANGLE
J1	6	EURO FASE	TR-402-25	PAR 20 4" SPCULAR CLEAR TRIM
J1	6	EURO FASE	HG-4PR	4" PAR HOUSING FOR NEW CONSTRUCTION 5-5/8" HIGH
J1	6	OSRAM/SYLVANIA	50PAR20/HAL/SPL/NFL30	50W 120V PAR LAMP 20 1/8" DIAMETER WITH 30° BEAM ANGLE
K	5	AMERICAN FLUORSCENT	NW232C	UTILITY LIGHTING
K	10	OSRAM/SYLVANIA	FO32/835/XP/ECO	32W T8 FLUORESCENT 48" LONG 3500K 83CRI
L	7	LIGHTOLIER	LYTECASTER 2046	RECESSED DOWN LIGHT WITH SPECULAR CLEAR ALZAK TRIM
L	7	LIGHTOLIER	LYTECASTER 2002 P1	NON IC HOUSING 5-1/2" HIGH
L	7	BULBRITE	JTT60WH	BT 15 SOFT WHITE 60W
M	21	JUNO	ULH322-WH	UNDER CABINET TASK LIGHT 22" LENGTH
M	63	THHC XELOGEN	G4S/1210XHf-10W FROSTED	10W FROSTED G4 BIPIN LAMP
M1	4	JUNO	ULH214-WH	UNDER CABINET TASK LIGHT 14" LENGTH
M1	8	THHC XELOGEN	G4S/1210XHf-10W FROSTED	10W FROSTED G4 BIPIN LAMP
N	2	BARCO LIGHTING	BFL282-S54	LINEAR T5 FLUORESCENT ADJUSTABLE STAGGER STRIP
N	4	OSRAM/SYLVANIA	FP24/830/HO	24W T5 FLUORESCENT 24" LONG 3000K 82CRI

MANUFACTURER: ERCO  
SPECIFICATION: STELLA SP 73501.023 WHITE  
TYPE: A

Stella Spotlights for PAR Lamps

Stella Spotlights for PAR Lamps are designed for high-contrast, high-contrast lighting. They feature a die-cast aluminum housing and a clear, specular lens. The spotlights are available in two sizes: 4" and 6". The 4" model is suitable for 50W PAR lamps, while the 6" model is suitable for 75W PAR lamps. Both models offer a beam angle of 30° and are available in two finishes: White and Black. The spotlights are designed for use in high-contrast environments, such as galleries, museums, and retail spaces. They are also suitable for use in high-contrast environments, such as galleries, museums, and retail spaces.

design illuminations  
215 WEST CHICAGO AVENUE, CHICAGO ILLINOIS 60610, TEL 312 9441000 EXT 265

MANUFACTURER: USHIO  
SPECIFICATION: 50W EXZ/ N/ BA/ FG  
TYPE: H

TIMESTER HALOGEN LAMPS + M6-18 REFLECTOR

Timester Halogen Lamps + M6-18 Reflector are designed for high-contrast, high-contrast lighting. They feature a die-cast aluminum housing and a clear, specular lens. The lamps are available in two sizes: 50W and 75W. Both models offer a beam angle of 30° and are available in two finishes: White and Black. The lamps are designed for use in high-contrast environments, such as galleries, museums, and retail spaces. They are also suitable for use in high-contrast environments, such as galleries, museums, and retail spaces.

design illuminations  
215 WEST CHICAGO AVENUE, CHICAGO ILLINOIS 60610, TEL 312 9441000 EXT 265

MANUFACTURER: LIGHTOLIER  
SPECIFICATION: AA7/CDF7P56DM2  
TYPE: E

3 1/2" Aperture PAR56 Lamp Low Voltage

AA7/CDF7P56DM2 is a 3 1/2" Aperture PAR56 Lamp Low Voltage. It is designed for high-contrast, high-contrast lighting. The lamp features a die-cast aluminum housing and a clear, specular lens. It is available in two finishes: White and Black. The lamp is designed for use in high-contrast environments, such as galleries, museums, and retail spaces. It is also suitable for use in high-contrast environments, such as galleries, museums, and retail spaces.

design illuminations  
215 WEST CHICAGO AVENUE, CHICAGO ILLINOIS 60610, TEL 312 9441000 EXT 265

MANUFACTURER: ARTEMIDE  
SPECIFICATION: MUDULE  
TYPE: F

MINI SLURP SUSPENSION SYSTEM

MINI SLURP SUSPENSION SYSTEM is a modern lighting fixture designed for high-contrast, high-contrast lighting. It features a die-cast aluminum housing and a clear, specular lens. The system is available in two finishes: White and Black. The system is designed for use in high-contrast environments, such as galleries, museums, and retail spaces. It is also suitable for use in high-contrast environments, such as galleries, museums, and retail spaces.

design illuminations  
215 WEST CHICAGO AVENUE, CHICAGO ILLINOIS 60610, TEL 312 9441000 EXT 265